



No problem!

We solve...

ALYA
TECHNIC

Heating - Cooling - Air Conditioning,
Ship Mechanics and Industrial Kitchen Equipment

www.alyateknik.com.tr

COMPANY PROFILE

ALYA TECHNIC

Our company which was established to provide project and engineering services in domestic and overseas market in the areas of cooling systems, heating systems, chilling rooms, industrial kitchen equipment, heat recovery units, fans, ship fans, ship equipment supplies and cleaning products has moved us to;

Indispensable, full of confidence, friendly togetherness spanning many years as a result of reliability, customer orientation, innovativeness, quality, responsibility, confidentiality and teamwork, contemporary service concept and making production in advantageous prices. Our journey extending from the magic of creativity to magnificent design, from technology to experienced arts is originated from our ability to be tied to our common goals.

VISION

To ensure satisfaction of our customers and to be ranked among the respected organizations in the sector by keeping the quality in the forefront in every process of the services we produce; and to provide services above the expectations of our customers by following the rapidly evolving technology in order to produce efficient and technological solutions in the field of activity.

MISSION

By providing our customers to access their audience easily and rapidly and together with our new customers we will add our portfolio, AlyaTechnic which believes with its entire staff that it will be among the leading companies in the industry proceeds on its way by institutionalizing. Our company follows the renewed production technologies and works to make better quality, faster and more economical production for you.

SHIP ACCOMMODATION SPACE AIR-CONDITIONING

* Depending on the IMO and SOLAS regulations on the ship accommodation space air conditioning, ISO 7547 for accommodations spaces, ISO 8861 for Machine Room, ISO 9943 for Kitchen and ISO 8863-8864 applications for Navigating Bridge are considered in the projects and calculations.

* System selection and projects for the air conditioning installations and type, quantity and capacity selections for their devices and equipment are designed by following the rules of SOLAS 1974, 1988 and annexes and the rules of IMO 2000.



SHIP TYPE AIR CONDITIONING PLANT



SHIP TYPE COOLING GROUP



CABIN UNIT



SHIP TYPE EXPROOF FANS

HEAT RECOVERY UNITS



- Air Flow: 100 - 5.000 m³ / h
- Basically it works with the principle of adding the energy in the air exhausted from the ambient to fresh air delivered to the ambient.
- When ventilation is performed for 12 months it can be used in both heating and cooling season. While the fresh air to be obtained with the cooled air in the ambient is being cooled in summer, the fresh air to be obtained with the hot air in the ambient is heated in the winter.
- They are preferred especially in the regions where the outside temperature is too cold or too hot and in the places such as bars and discos where air-conditioning need is very high.
- They can provide up to 50% energy recovery.
- There is an exhaust fan and a fresh air fan on our models. In both directions the filter is on the device.

It is driven with two centrifugal fans with forward curved blades having the external rotor motor and one of them for the fresh air and other for the exhaust air. There is Eu7 class filter in the fresh air intake and Eu3 class filter at the exhaust side. Thermostat controlled electric heater makes the reinforcing mission when the exchanger is not sufficient. Fan speed and blowing temperature are set from the control panel, filter change information is received.

AIR CONDITIONING PLANTS



Reinforcement Profiles

AlyaTECHNIC Air Conditioning Plants are produced with the aluminum, stainless steel or galvanized material connector between the corner profiles in their module structure and reinforcement profiles used to reinforce the door panel.

Corner Elements

The corner elements used for ensuring the corner connections of the corner profiles in the module structure of AlyaTECHNIC are made of the aluminum or plastic material by the injection method. By means of the conformity with the corner profiles in design of the corner elements possible air leaks and the thermal bridge which may occur are prevented. Again, thus this allows to minimize the internal pressure losses and not to cause any pollution.

Exterior Panels

In AlyaTECHNIC module structure, the cover panels used for the aim of closing 6 visible faces of the frame structure consisting of corner profiles, reinforcement profiles and corner elements are made of the galvanized sheet. In the sandwich structure panels internal wall thickness is 0,60/0,80 mm and outer wall thicknesses are 0,80/1 mm. There are rock wool, glass wool or polyurethane material in the middle of the sandwich structure in order to ensure the sound and heat insulation. Total panel thickness is 25 mm or 50 mm. The panels are used as fixed cover as well as service cover.

FANS

Round (in-line) Duck Fans

- Suitable for the speed control with thyristor or 5-stage transformer.
- External rotor engine with thermal contact and maintenance free.
- Standard assembly – can be mounted in all position thanks to hanger profile.
- The best design for 30 years.



AYS-K

- Max. Air flow rate is 1.700 m³ / h
- Backwardly curved, sparse channel radial fan
- The casing is made of galvanized steel (DX54D + ZE7B)
- C Class sealed ((EN 12237 - 2003) casing clamped in the press.
- Ip55 terminal box (Ip68 M20) is installed outside the building.



AYS - KD

- Max. Air flow rate is 5.500 m³ / h
- High efficiency and low noise level with mixed-flow wing design.
- The casing is made of galvanized steel material.

Acoustic Insulated (in - line) Duct Fans

- Low noise level
- Suitable for the speed control with thyristor or 5-stage transformer.
- External rotor engine with thermal contact and maintenance free.
- Easy maintenance and service opportunities thanks to the intervention cover.
- Can be installed at any angle



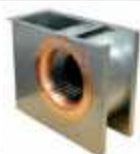
AYS - KVKF

- Max. Air flow rate is 3.100 m³ / h
- Forwardly curved radial fans with single inlet.
- The casing is single-walled and acoustic and heat insulated with 40 mm rock wool.
- The outer surface is made of galvanized steel and inner surface protector.

Ex-proof FANS

Technical Specifications

- Max. Air flow rate is 5.000 m³/ h
- Ex e II T3
- Backwardly curved, sparse channel radial fan.
- Suitable for the speed control with 5-stage transformer.
- The casing is made of galvanized steel material.
- Can be installed at any angle.



- Max. Air flow rate is 1.180 m³/ h
- Ex e, eq II T3
- Forwardly curved scroll fans made of finned aluminum material.
- The casing is made of silicon aluminum alloy material.
- Can be installed at any angle



GENERAL FEATURES

- Used in the environments where there are hazards such as explosion, deflagration and ignition in ships.
- AEX fans are manufactured in accordance with international norms.
- TAM, TAM-MAX, URF, CTF, DTK, BCF and EJET-R type fans can be manufactured as Exproof.
- There is no restriction in diameter, can be manufactured in various combinations of blade angle intervals of Ø250 mm - Ø3550 mm.
- It is manufactured in RAL 7036 gray paint over St 37.2 steel production as standard; and optionally is produced in hot dip galvanized, epoxy primer and topcoat paint.



UNINSULATED SPIRO AIR CHANNELS



SPIRO Safe is the most comprehensive channel system.

Wide range of fittings and accessories allows to use SPIRO safe products in all types of ventilation systems. It provides guaranteed sealing and energy saving.

Double sealing system prevents leakage and energy loss. Energy losses resulted from the leakages in the air channels are so high that SPIRO safe channel system will pay off all costs in a few months. It can withstand 2500 – 3000 PA negative and positive pressure and fulfills the C-Class requirements.

The sealing strip is installed at the factory. Double sealing ring which is mounted at the factory is fixed with the aluminum zinc strip at the preformed slot. The channels are produced in 3 m and 6 m long.

Uninsulated Spiro Pipe Standard Diameters (mm):

80 - 100 - 125 - 150 - 160 - 180 - 200 - 224 - 250 - 280 - 300 - 315 - 355 - 400 - 450 - 500 - 560 - 600 - 630 - 710 - 800 - 900 - 1000 - 1120 - 1250 - 1400 - 1600

INSULATED SPIRO AIR CHANNELS

Insulated 30°elbow



Insulated T-Part



Insulated 45°elbow



Insulated 90°elbow



Insulated Spiro Pipe Standard Diameters (mm):

80 - 100 - 125 - 150 - 160 - 180 - 200 - 224 - 250 - 280 - 300 - 315 - 355 - 400 - 450 - 500 - 560 - 600 - 630 - 710 - 800 - 900 - 1000 - 1120 - 1250

VENTS



Vents

Vents are manufactured from the aluminum material with the extrusion method specially rolled as collector and dispenser in different dimensions. It is suitable for horizontal shots due to its wing structure. The vent wings can be easily adjusted manually. Easily installed dampers can be adjusted easily with a screwdriver.

In the cases where a coanda effect is desired to be created it can be installed close to the ceiling. On request a damper can be added. Screw system is standard.

On request it can be manufactured in the desired dimensions.

COOLING GROUPS CHILLER



Chiller is the main equipment consisting of the condenser and evaporator volumes. It activates and deactivates with the need of cooling load by working parallel to the building automation. It has the manual or automatic startup option as summer and winter.

Chiller is the pump assembly turning the water inside. From this pump assembly, the main system pushing collector is fed, cold water is pumped to the system, the cold water is delivered to the fan-coil devices at the end of the line and the water which is cooled when cooling the areas where the fan-coil devices are determined is warmed at the least and returns to the chiller circuit. The water coming to the return collector is delivered to the chiller circuit by an additional by-pass line and re-cooled.

CHILLING ROOM COOLING GROUPS



CHILLING ROOMS

Chilling rooms can be designed for preservation of the broiler, vegetable bin, deep freeze (frozen food), health products or according to your special storage requirements.

CHILLING ROOM PANELS

Industrial chilling room panels are at 111 cm width as standard and manufactured at 50 cm to 1000 cm length and in accordance with CE and ISO standards. They are produced in the thicknesses of 50 - 60 - 80 - 100 - 120 - 150 - 180 and 200 mm and composed of three main materials in the form of polyurethane, surface coating and cam-lock. We have various alternatives in the surface coatings based on your requests.

HOME AND OFFICE TYPE AIR-CONDITIONERS



A class 41DA gas energy saving air-conditioners.

The capacity options between 7000 btu and 48000 btu.

For those who prefer refreshment in summer and warmth in winter in the locations such as residences, work places, shops and offices.



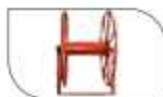
SHIPEQUIPPINGandOUTFITTINGMATERIALS



Transmission Circuits



Distributors



Rope Rollers



Rope Drums



Camel-neck
wind catchers



Camel-neck
wind catchers



Cork Wind Catchers
Ventilation Grills



Fire Cabinets



Emergency Cowls



Emergency Cowls



Marine Type Fire
Dampers



Air Cooling Machine
Control Room
Air Conditioners



Separator Room
Fire Dampers



Butterfly Cowls



Built-in Manholes



Cork Wind Catchers
with Handle



Cork Wind Catchers
without Handle



Cork Head Wind
Catchers



Blinds



Blinds



Tanks



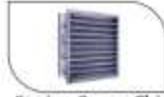
Chimney Blinds



Tool Cabinets



Butterfly Fixed
Blinds



Engine Room Chimney
Ventilation Shutters



Couplings



Surveillance Ladders



Marina Louver



Unidirectional Cases



Bi-Directional Cases



Sliding Stairs



Water Tanks with
Indicator



Mechanism Doors



Welded Elbows



Life Buoy Hangers

INDUSTRIAL KITCHEN EQUIPMENTS



RANGE

- AISI 304 Stainless Steel
- It is long-lasting, easy to clean and hygienic thanks to the stainless steel construction.
- Each of the top heaters can operate by controlling with stage switch individually.
- The oven is also adjustable through the lower and upper stage setting.
- It has an ergonomic design that provides comfort for user in every way.
- 380/400V ~ 50 Hz.



STOREROOM TYPE REFRIGERATOR

- AISI 304 Stainless Steel
- Polyurethane insulation 40 kg / m³ density
- Detachable conditioning compressor
- "CFC Free", R-134A Refrigerant gas
- Static cooling
- Working interval -20 °C, +8 °C (tropical, 43 °C)
- 230V - 1 + B - 50 and 60 Hz.



DOUBLE BASIN WORK BENCH

- AISI 304 Stainless Steel
- Adjustable rutile feet
- Design at the desired size
- 50x40x25 basin (changeable sizes)



SHIP TYPE GLASS CABINET

- AISI 304 Stainless Steel
- Internal shelves
- Slide / Swing Door
- Design at the desired size



DISHWASHER

- AISI 304 Stainless Steel
- Full Automatic
- Energy, detergent and water saving
- 2-Programming options
- 220V and 220 V - 50 Hz



WORK BENCH

- AISI 304 Stainless Steel
- Adjustable rutile feet
- Design at the desired size
- Slide / Swing Door



TEA MACHINE

- AISI 304 Stainless Steel
- Adjustable automatic thermostat
- Hygienic
- Double tap
- Various models



TOASTER

- AISI 304 Stainless Steel
- Hygienic
- Adjustable automatic thermostat
- Single / double tap options
- Electric and gas system options



FRYER

- AISI 304 Stainless Steel
- Oil tank
- Secure oil drain valve
- Adjustable automatic thermostat
- Electric, LPG and natural gas systems



GRILL

- AISI 304 Stainless Steel
- Corrugated / flat molding options
- Adjustable automatic thermostat
- Electric, LPG and natural gas systems



SALAMANDER

- AISI 304 Stainless Steel
- Up / down lift
- Adjustable roasting tray
- Adjustable grid wire
- Easy to use and easy cleaning
- Electric, LPG and natural gas systems



SHELVING UNIT

- AISI 304 Stainless Steel
- Demountable
- Bearing capacity average of 100 kg for each floor
- Ideal for cold rooms, wet and humid environments
- Easy and simple installation

INDUSTRIAL KITCHEN EQUIPMENTS



MINCING MACHINE

- AISI 304 Stainless Steel
- AISI 304 stainless steel
- 220/240/380/400 volt options
- Removable intake
- Loading hopper
- Suppression wedge
- CE safety and hygiene standards



DOUGH MACHINE

- AISI 304 Stainless Steel
- 30/40/50 liters capacity options
- Single / double speed options
- 220/300 volt options



HOOD

- AISI 304 Stainless Steel
- Easy and simple installation
- Design at the desired size



PIZZA OVEN

- AISI 304 Stainless Steel
- Easy cooking
- Ergonomic design
- Controlled Thermostat
- Individual temperature control each hole



GAS RANGE

- AISI 304 Stainless Steel
- LPG / Natural Gas Options
- 2/4 hotplates options
- Cook top and oven
- Easy to use feature



DISHWASHER

- AISI 304 Stainless Steel
- 500 plate capacity
- Corrugated / flat molding options





ALYA
TECHNIC

Mescit mah. Atatürk Cad. Birmes San. Sit. A-4 Blok No:3 Tuzla İstanbul TÜRKİYE

☎ +90 216 491 94 67

📞 +90 216 491 94 68

✉ info@alyateknik.com.tr

www.alyateknik.com.tr

Gsm: +90 542 577 25 92 ALYA